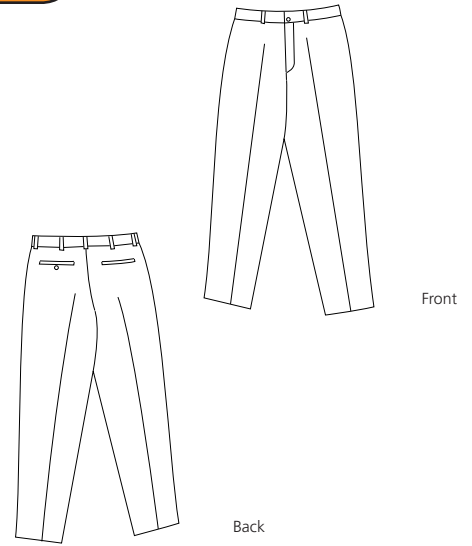


# Industrial Work Pant



## PT20

- \* 7.5-ounce \* 65/35 poly/cotton twill \* Front and back pockets
- \* Jean-style waistband \* Button closure

**Care Instructions:**  
Machine wash, tumble dry.  
Meets IL50 specifications

Finished Measurements in Inches								
Size	27	28	29	30	31	32	33	34
Waist	27.5	28.5	29.5	30.5	31.5	32.5	33.5	34.5
Avail. Lengths	37U	30, 32, 37U	37U	*28, 30, *31, 32, 37U	37U	*28, 30, *31, 32, *33, 34, 37U	37U	*28, *29, 30, *31, 32, *33, 34, 37U, 40U
Back Pocket	5.25	5.25	5.25	5.25	5.25	5.25	5.25	5.25
Cuff Opening	15.75	16	16.25	16.5	16.75	17	17.25	17.5
Size	35	36	37	38	40	42	44	46
Waist	35.5	36.5	37.5	38.5	40.5	42.5	44.5	46.5
Avail. Lengths	37U	*28, *29, 30, *31, 32, *33, 34, 37U, 40U	37U	*28, *29, 30, *31, 32, *33, 34, 37U, 40U	*28, 30, *31, 32, *33, 37U, 40U	*28, 30, *31, 32, *33, 37U, 40U	*28, 30, *31, 32, 37U	30, 37U
Back Pocket	5.25	5.25	5.25	5.25	5.25	5.25	5.25	5.25
Cuff Opening	17.75	18	18.25	18.5	18.75	19	19.25	19.5
Size	48	50	51	54	56	58	60	
Waist	48.5	50.5	51.5	54.5	56.5	58.5	60.5	
Avail. Lengths	30, 37U	30, 37U	37U	37U	37U	37U	37U	
Back Pocket	5.25	5.25	5.25	5.25	5.25	5.25	5.25	
Cuff Opening	19.75	20	20.25	20.5	20.75	21	21.24	

Waist measured by circumference. Length measured by inseam. Back pocket measured at opening. Cuff opening measured by circumference.  
(U) Indicates unfinished hem.  
Hemming service available in 1/2" increments on unfinished styles.

Colors	
	Black
	Brown
	Charcoal
	Navy
	Spruce Green

Color Chart	
<b>Base Color</b>	Black
Textile PMS	19-4006TC
General PMS	Process Black
<b>Base Color</b>	Brown
Textile PMS	19-1314TC
General PMS	7533C
<b>Base Color</b>	Charcoal
Textile PMS	19-3908TC
General PMS	432C
<b>Base Color</b>	Navy
Textile PMS	19-3925TC
General PMS	539C
<b>Base Color</b>	Spruce Green
Textile PMS	19-4220TC
General PMS	5477C

**Please Note:**  
Colors shown are approximate and for reference only. For closest match see PMS colors, or for exact match, returnable samples and grommeted samples are available.

\* Sizes not available in Spruce Green or Brown.